



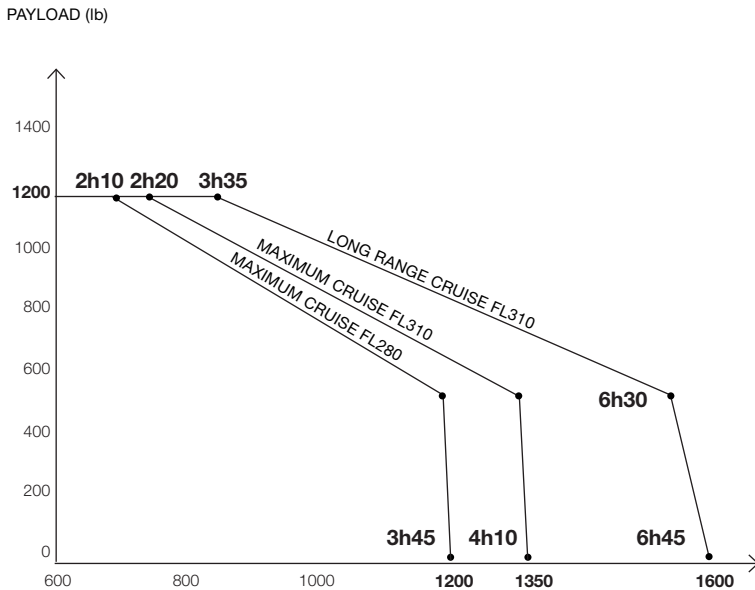
TBM
900

SPECIFICATIONS
& PRICE LIST 2016



The TBM 900 is the latest member in Daher's TBM family of very fast single-engine turboprop aircraft. It offers superior performance - a maximum cruise speed of 330 kts. - and high efficiency with a 1,730 naut. mi. maximum range and a fuel consumption at economy cruise of 37 U.S. gal per hour.

This results from aerodynamic improvements, along with other aircraft enhancements. The maximum range and useful load, as well as the ability to land at small airports, are some of our customers' favorite features.



PAYLOAD RANGE (NM) WITH NBAA RESERVE
(100 NM ALTERNATE + FUEL RESERVE)

POWERPLANT

Type:	P&W Canada PT6A-66D turboprop	
Thermodynamic power	1825 hp.	
Nominal power	850 shp.	
Usable fuel capacity	291 US gal.	1,100 liters

EXTERNAL DIMENSIONS

Wingspan	42.10 ft.	12.833 m.
Height	14.29 ft.	4.355 m.
Length	35.22 ft.	10.736 m.
Wheel base	9.56 ft.	2.914 m.
Tailplane span	16.36 ft.	4.988 m.

INTERNAL DIMENSIONS

Maximum cabin width	3 ft. 11.64 in.	1.21 m.
Maximum cabin length	13 ft. 3.45 in.	4.05 m.
Maximum cabin height	4 ft.	1.22 m.
Maximum volume in cabin	123 cu. ft.	3.5 sq. m.

LOADING

Basic empty weight	4,629 lb.	2,097 kg.
Maximum ramp weight (MRW)	7,430 lb.	3,370 kg.
Maximum takeoff weight	7,394 lb.	3,354 kg.
Maximum zero fuel weight	6,032 lb.	2,736 kg.
Maximum payload	1,403 lb.	636 kg.
Maximum payload with full fuel:	891 lb.	404 kg.
Maximum luggage in storage areas (4 seats):	507 lb.	230 kg.
Maximum luggage in storage areas (6 seats):	330 lb.	135 kg.
Maximum luggage volume (large net):	30¼ cu. ft.	
	0.989 cu. m.	

PERFORMANCE (ISA CONDITIONS, MTOW, NO WIND.)

Maximum cruise speed at long-range settings	252 KTAS	467 km/h
Maximum cruise speed at 28,000 ft.	330 KTAS	611 km/h
Time-to climb to 31,000 ft.		18 min. 45 sec.
Certified ceiling	31,000 ft.	9,449 m.

RUNWAY DISTANCES

(ISA CONDITIONS, MTOW, NO WIND, 50 FT. OBSTACLE CLEARANCE)		
Takeoff	2,380 ft.	726 m.
Landing	2,430 ft.	741 m.

MAX. RANGE WITH MAX. FUEL

(ISA CONDITIONS, MTOW, NO WIND, ONE PILOT, 45 MIN FUEL RESERVE)		
@ 31,000 ft.		
252 KTAS cruise speed	1,730 NM	3,304 km
290 KTAS cruise speed	1,585 NM	2,935 km
326 KTAS cruise speed	1,440 NM	2,666 km



3.874 m
12.71 ft

12.833 m
42.10 ft



2.914 m
9.56 ft

4.355 m
14.29 ft

10.736 m
35.22 ft



4.988 m
16.36 ft

1 m
2.281 ft

TBM 900 STANDARD DEFINITION 2016



1 - AIRFRAME

- Metal structure and skin panelling
- Carbon fiber engine cowling and winglets
- Anticorrosion protection treatment
- Retractable gear with electrohydraulic actuation
- Hydraulic disc brakes
- Pressurized 6 seats cabin (6.2 psi) and baggage compartment
- Sound proofing and thermal insulation
- Pilot Access Door
- Large access door with retractable stairway
- Emergency exit
- Front storage compartment (not pressurized) with lockable access door
- Easy maintenance access doors
- Wing Tie-down attachments
- Jacking points
- Gaseous oxygen system for 6 seats and quick-donning masks for pilot & copilot
- 2016 standard paint scheme

2 - ENGINE

- PT6 A66D Pratt & Whitney Canada turboprop engine developing 1825 SHP thermodynamic, flat rated at 850 SHP
- Propeller with overspeed limiter, full feathering and reverse
- Oil cooler
- Anti-icing air inlet with inertial separator without operational limitation
- Dual polished exhaust system aerodynamically optimized
- Service access doors in cowlings
- Dual engine Chip detector displayed on flight display

3 - PROPELLER

- Full composite electrically de-iced five bladed Hartzell constant speed
- Polished aluminium spinner cone

4 - CONTROLS

- Dual flight controls, control wheel leather covered with 7 integrated functions on pilot control wheel: autopilot, electric pitch trim and rudder

- trim, transponder, frequency, changer, COM1, stormscope;
- Elevator, rudder and aileron electric trim
- Electrical pre-select flaps with integrated asymmetry detection system
- Central console including:
 - single lever power control with low bleed idle inhibition
 - electric flap control, fuel selector, manual pitch trim, ailerons electric trim
 - manual override control
- Adjustable rudder pedals
- Landing gear handle
- Dual toe brakes - Parking brake
- Landing gear emergency extension handle
- Automatic environment and pressurization control system with max diff. mode
- Alternate static source control
- Alternate ram air source control

5 - FUEL EQUIPMENT

- One structural fuel tank per wing
- Engine driven fuel pump
- Standby electrical fuel pump and low pressure switch indication
- Fuel tank selector with automatic fuel tank sequencer unit
- Capacitive fuel gauges with low fuel level warning system

6 - ICE PROTECTION

- Pneumatically deiced wing and tail unit
- Heated engine air intake lip
- Pilot controlled engine inertial separator
- Electrically heated propeller blades
- Electrically heated pitot tubes
- Electrically deiced stall warning sensor
- Pilot & Co-pilot electrically heated windshields - Ice detector light

7 - ELECTRICAL EQUIPMENT

- Automatic starter generator transition during start
- Lead acid battery 24V-42 A.h
- Starter generator 28V-300 Amp



- Standby generator 28 V- 100 Amp
- Electrical power control center
- Circuit breakers
- Anticollision strobe lights - Led Beacon on ground (Winglets & Tail)
- Navigation lights - Taxiing and landing LED lights
- Ground power plug - Ground clearance energy saver
- Tri-band ELT with GPS connection
- 14 V port + 2 USB port on copilot side + 2 USB port in passenger cabin

8 - INSTRUMENTS & STANDARD AVIONICS

- 2 GMA 1347C Dual digital audio controller with integrated marker beacon receiver, intercom and public address capability on outer side for pilot and co-pilot
- 2 GDU 1040A, 10" PFD display with three axis flight dynamics, airspeed, altitude, vertical speed, HSI w/ perspective modes, turn, bank side slip, NAV/COM frequencies indication and AP annunciation
- 1 GDU 1500 15" multi-function display with engine (w/ optimum TRQ setting display), pressurization, electrical, fuel, flaps and trims indication, Crew Alerting System (CAS), aircraft synoptics and super large navigation mapping system.
- 2 GIA 63W Nav/Com/ILS/WAAS GPS
- 2 GEA 71 Engine and airframe interface unit
- 2 GRS 77 Attitude and Heading Reference System (AHRS)
- 2 GMU 44 triaxial magnetometer
- 2 GDC 74B digital air-data computers with dual probe system
- 1 GTX33 Mode S transponder with Extended Squitter (ES)
- 1 GCU 475 remote FMS control panel conveniently located on the central console
- 1 GMC 710 autopilot mode controller located in upper central panel
- 4 GSA 81 torque flight servos (yaw, pitch, pitch trim and roll)
- 1 GTA 82 adapter for yaw auto trim device
- Digital Backup instrumentation altitude, airspeed and altimeter indicator
- Airframe de-icing control panel
- Inertial separator control
- Parking brake control
- Landing gear control panel

- Electric generation controls and monitoring on overhead panel
- Advisory panel displayed on GDU 1500 Master Caution, alerts & Aural warnings
- Cabin temperature control (dual zone, with override capability)
- Heated stall warning system
- Digital chronometer displayed on GDU 1040s
- Flight time hourmeter
- Instrument panel lighting, CB dedicated switch lighting
- 2 Bose Headsets
- **Flight Data Recorder (new 2016)**
- **Aural warnings (new 2016)**
- **Flightstream FS210 Bluetooth avionics / handheld communication feature (new 2016)**

PREMIUM EDITION FITTINGS INCLUDING

- 6 fabric seats with adjustable backrests, folding armrests and intermediate seats with forward or backward accommodation with multiple installation configuration
- Fully adjustable (3-axis) pilot and co-pilot seats and adjustable rudder Pedals
- Cabin accommodation capable of 4-seat layout includes 2 nets for luggage loading
- Leather upper cabin side panels, leather covered lower cabin side panels, wool carpeting
- Individual fresh-air vents and reading lights
- Pilot and co-pilot sun visors
- Ship-powered headset jacks behind each seat (Bose Lemo plugs)
- Baggage compartment with straps and baggage net
- Cabin halon fire extinguisher
- Parking protection kit - Windshield cover
- Environment system w/ engine driven air-conditioning system (VCS)

AIRCRAFT & OPTIONS

2016 CUSTOMER CARE

Maintenance program

+ Extended warranties

+ Maintenance tracking

= Complete Support Service



	PRICES	OPTIONS
TBM STANDARD EQUIPPED 2016	\$3,658,336	Included
Enhanced Operational Package	\$140,420	Included
<ul style="list-style-type: none"> • RVSM data package • GTX 33 Mode S transponder (#2) with Extended Squitter (ES) • GRA 55 Radar Altimeter GARMIN displayed on PFDs • TAWS-B, class B TAWS worldwide database • GTS 820 Traffic Advisory System (TAS) displayed on MFD and PFD inset map • KN 63 DME displayed on GDU 1040As (**) • Electric pitch and rudder trims on co-pilot control wheel • WX 500 Stormscope displayed on G1000 displays • GWX70 digital four color weather radar - 10" antenna • 6 genuine leather seats with adjustable backrests and folding armrests in replacement for fabric • Genuine leather upper side panels • Gold or Brushed Stainless trimming of individual fresh-air vents and reading light ring 		

AVIONICS AND SYSTEMS	PRICES	OPTIONS
• Angle of Attack (AOA) sensor, computer and PFD visualization (to be retrofitted free of charge at the latest May 2016)	\$11,900	
• AOA + Electronic Stability Protection (ESP) + Under Speed Protection (USP) (to be retrofitted free of charge at the latest May 2016)	\$31,900	Included
• GDL 69 A SXM datalink weather information and XM audio infotainment (US Coverage Only) (*)	\$9,480	Included
• Chart view option for GDUs	\$4,100	Included
• Synthetic Vision Technology to be displayed on both of PFD GDU1040As	\$19,980	Included
• GSR56 datalink with satphone through headsets and WX weather information (worldwide coverage - subscription required)	\$11,900	Included
• Additional 2 Bose Headsets (model A20)	\$1,980	
• GTX 33DES Extended Squitter Mode S with diversity antenna transponder (#1) in replacement for GTX 33ES (**)	\$9,980	
• RA 3502 ADF displayed on GDU 1040As (**)	\$18,910	
• KHF 1050 HF with control box located into instrument panel and audio mix G1000 integrated	\$89,900	
• Fire detection system	\$13,930	



INTERIORS	PRICES	OPTIONS
• One lower storage cabinet (left side or right side)	\$4,910	Included
• One top storage cabinet (left side or right side)	\$4,910	
• One pilot case support (right side or left side)	\$3,450	
• One lower storage cabinet with cooler (right side only)	\$5,120	
• Chemical Toilet cabinet to be installed in place of left hand central seat, cannot accommodate LH storage cabinet	\$9,990	
• Additional choice among 32 leather colors for seats & interiors (Additional lead time up to 10 weeks)	\$5,000	
• Deluxe wood or carbon trim interior package central upper panel, table cover and cabinet doors covers (to be selected 1 month earlier than interiors)	\$8,600	Included

(*) Only available for N registered aircraft or countries wherever applicable. Applicability to be checked prior to sale with Daher Airplane Business Unit Sales & Marketing Department (this note have to be reviewed according to EASA approval of N model)

(**) Mandatory option for European operations. Applicability should be checked prior sale with Daher Airplane Business Unit Sales & Marketing Department.

OTHER OPTIONS	PRICES	OPTIONS
• Removal pilot access door (subject to availability)	-\$79,350	
• Pearlescent paint	\$10,840	
• Personal sign on rudder	\$3,700	
• Customized four color paint scheme	\$5,000	
• Fully customized paint scheme	On request	
• Registration package only for Japan and Russia	\$35,000	
• Option change during production will be subject to a late minimum surcharge	\$2,500	

WARRANTIES AND MAINTENANCE	PRICES	OPTIONS
• Pratt & Whitney Canada Eagle Plus® Extended Warranty: extension to 7 years or 2.500 hours whichever comes first.	\$20,000	
• 2016 TBM 900 Care Program (TCP): up to the Aircraft fifth (5th) Annual Inspection or up to 1,000 flight hours total time, whichever comes first, assigned to the original first retail customer, and CAMP computerized maintenance follow-up.	Included	Included
• Avionics System Warranty extension to 5 years for the following components only: all Garmin equipment, L3 Com Stormscope WX500 and Honeywell TAS, Radar Altimeter and DME	\$26,848	Free in 2016
• System Warranty extension to 5 years or 1,000 hours for the following components only: Flap Actuators, Propeller, Fuel Unit, Gauging System, Oxygen System, Bleed Air System, Cabin Pressure control System, Air conditioning System, Landing Gear and actuators, Mechanical fuel pump, Hydraulic unit, Vaccum System, Windshield, Flight controls actuators, Electrical Power unit, Starter Generator, Standby altimeter & Airspeed indicators, Torque & Oil pressure Transducers, Overspeed governor (see Warranty Conditions for details).	\$17,830	Free in 2016

YOUR TOTAL:

2016 ELITE PACKAGE \$ 3,889,626

Prices are valid for deliveries from January 1st, 2016 to December 31st, 2016 and are subject to change without prior notice. All prices are ex-works factory, and exclude all taxes.



AIRPLANE BUSINESS UNIT

Aéroport de Tarbes-Lourdes-Pyrénées, 65921 Tarbes cedex 9 - France
Tel : +33(0)5 62 41 73 00 - Fax : +33 (0)5 62 41 71 40

AMERICAS SALES

SNA - Pompano Beach Airpark - 601 NE 10th St, Pompano Beach, FL 33060, USA
Tel: (954) 893-1414 - Fax: (954) 964-0805

www.tbm.aero